

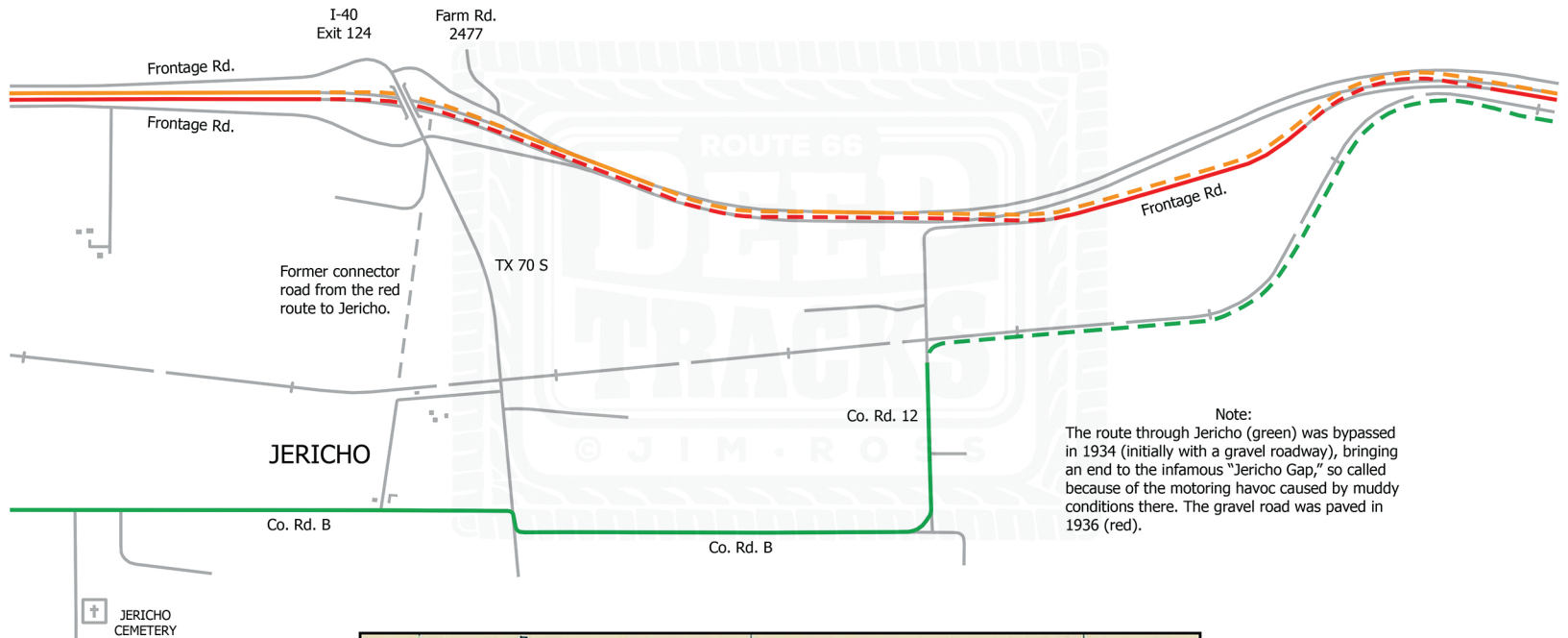
Alignments on this Map

Green: Original route prior to paving.

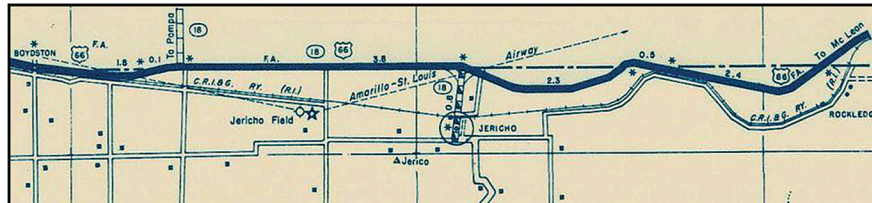
Red: First paved route, which subsequently served as the eastbound half of 4-lane US 66 and parts of which later became eastbound I-40 (left side of map) and the south frontage road to I-40 (right side of map).

Orange: Lanes added in the 1950s to create a 4-lane highway, part of which was later adopted by westbound I-40 (left side of map).

Between McLean (east)
and Groom (west)



Note:
The route through Jericho (green) was bypassed in 1934 (initially with a gravel roadway), bringing an end to the infamous "Jericho Gap," so called because of the motoring havoc caused by muddy conditions there. The gravel road was paved in 1936 (red).



Pre-4-lane map showing Jericho on the original alignment with the connector road to the red route. Source: Schaffer Farm.