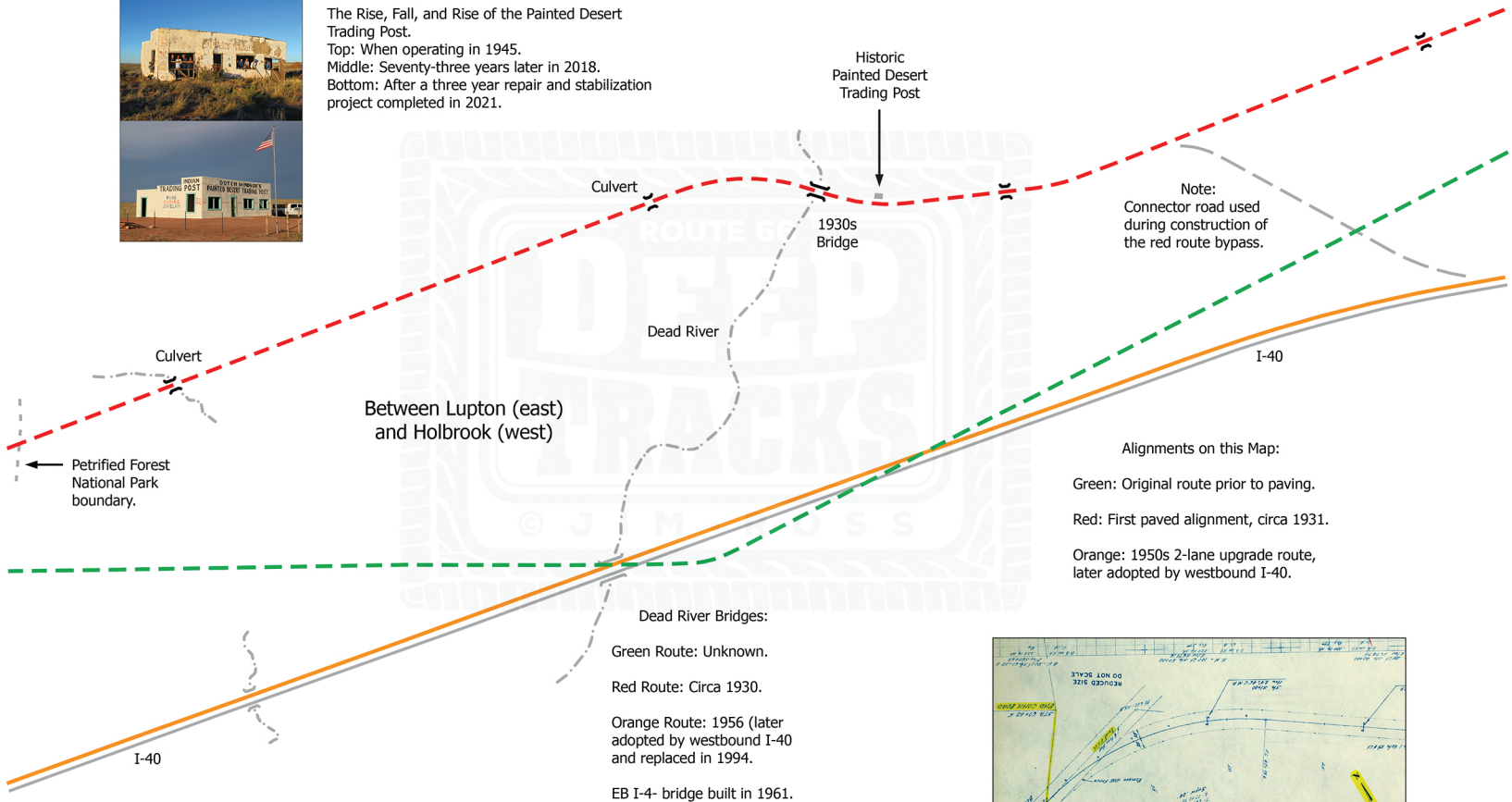




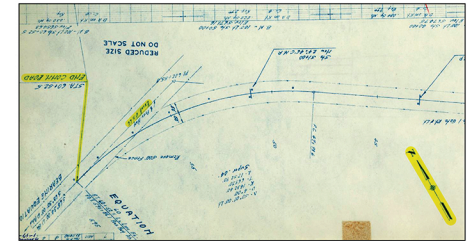
The Rise, Fall, and Rise of the Painted Desert Trading Post.
 Top: When operating in 1945.
 Middle: Seventy-three years later in 2018.
 Bottom: After a three year repair and stabilization project completed in 2021.

PADRES
 MESA
 RANCH



Alignments on this Map:

- Green: Original route prior to paving.
- Red: First paved alignment, circa 1931.
- Orange: 1950s 2-lane upgrade route, later adopted by westbound I-40.



Project plans used for construction of the orange route include the connector road to the red route (dashed gray line above). The plan sheet has been rotated so that north is toward the top. Highlighted are the notations for "Exist. U.S. 66" and "END CONN. ROAD".