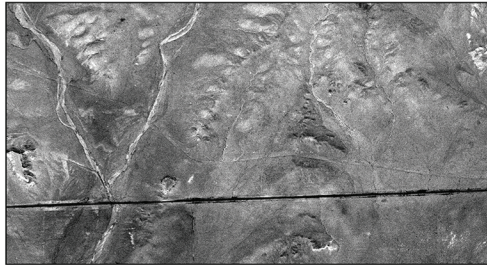


Alignments on this Map

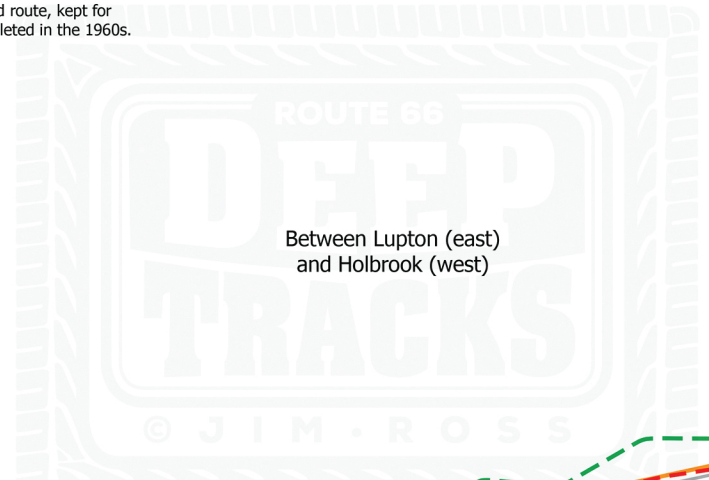
Green: Original route prior to paving.

Red: First paved alignment, circa 1931.

Orange: 1950s 2-lane upgrade to the red route, kept for the westbound lanes of I-40 when completed in the 1960s.



The green route between Goodwater Rd. and Twin Wash was still visible in this 1954 aerial photograph, seen in relationship to the first paved alignment (red).



Between Lupton (east)
and Holbrook (west)

