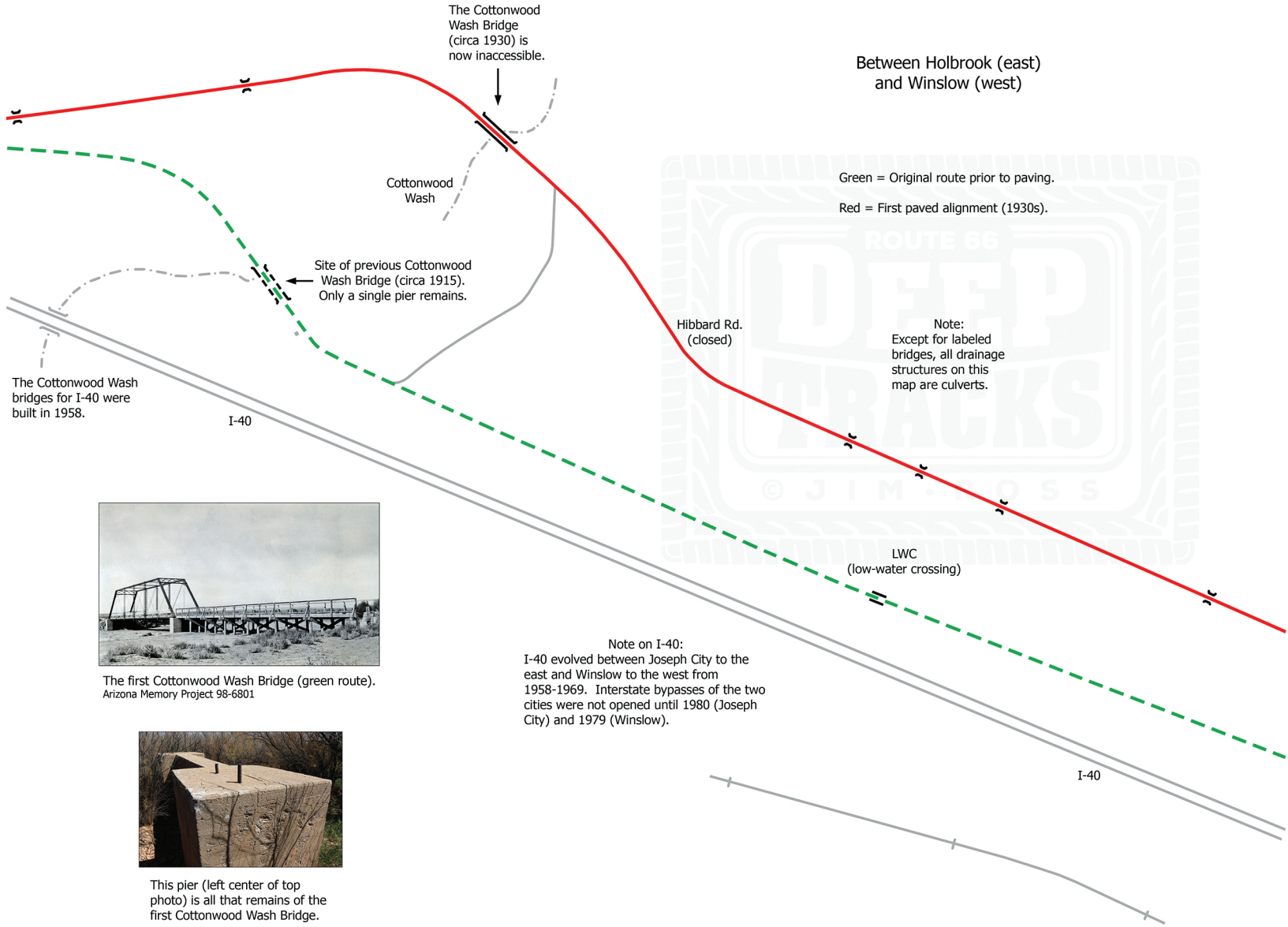


Between Holbrook (east)
and Winslow (west)



Green = Original route prior to paving.
Red = First paved alignment (1930s).

Note:
Except for labeled
bridges, all drainage
structures on this
map are culverts.

Hibbard Rd.
(closed)

LWC
(low-water crossing)

Note on I-40:
I-40 evolved between Joseph City to the
east and Winslow to the west from
1958-1969. Interstate bypasses of the two
cities were not opened until 1980 (Joseph
City) and 1979 (Winslow).

The Cottonwood
Wash Bridge
(circa 1930) is
now inaccessible.

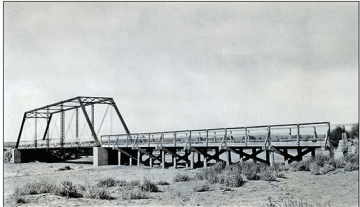
Cottonwood
Wash

Site of previous Cottonwood
Wash Bridge (circa 1915).
Only a single pier remains.

The Cottonwood Wash
bridges for I-40 were
built in 1958.

I-40

I-40



The first Cottonwood Wash Bridge (green route).
Arizona Memory Project 98-6801



This pier (left center of top
photo) is all that remains of
the first Cottonwood Wash Bridge.