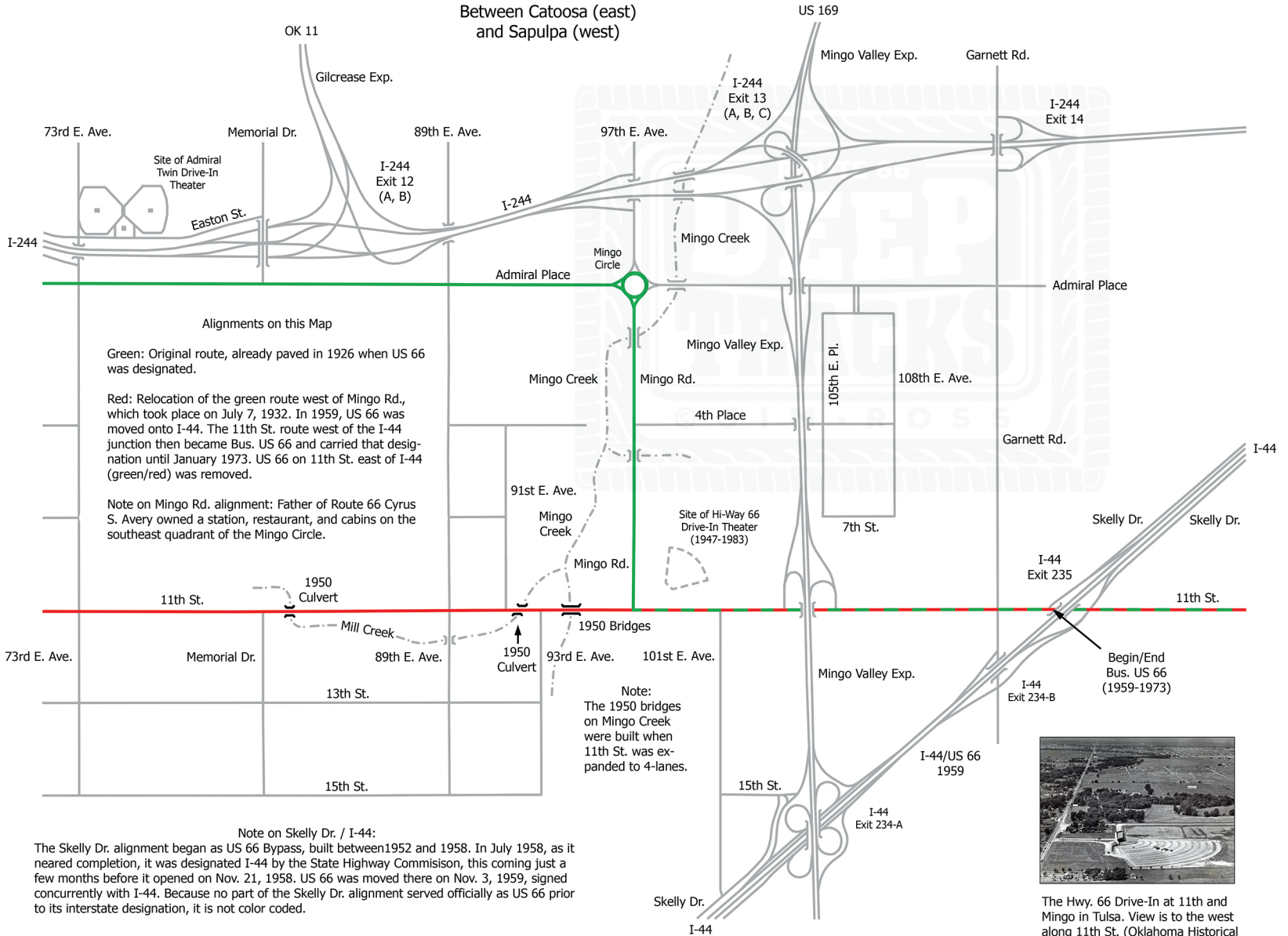


Between Catoosa (east)
and Sapulpa (west)



Alignments on this Map

Green: Original route, already paved in 1926 when US 66 was designated.

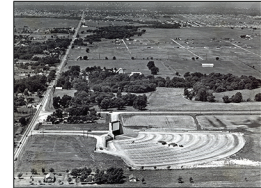
Red: Relocation of the green route west of Mingo Rd., which took place on July 7, 1932. In 1959, US 66 was moved onto I-44. The 11th St. route west of the I-44 junction then became Bus. US 66 and carried that designation until January 1973. US 66 on 11th St. east of I-44 (green/red) was removed.

Note on Mingo Rd. alignment: Father of Route 66 Cyrus S. Avery owned a station, restaurant, and cabins on the southeast quadrant of the Mingo Circle.

Note:
The 1950 bridges on Mingo Creek were built when 11th St. was expanded to 4-lanes.

Note on Skelly Dr. / I-44:

The Skelly Dr. alignment began as US 66 Bypass, built between 1952 and 1958. In July 1958, as it neared completion, it was designated I-44 by the State Highway Commission, this coming just a few months before it opened on Nov. 21, 1958. US 66 was moved there on Nov. 3, 1959, signed concurrently with I-44. Because no part of the Skelly Dr. alignment served officially as US 66 prior to its interstate designation, it is not color coded.



The Hwy. 66 Drive-In at 11th and Mingo in Tulsa. View is to the west along 11th St. (Oklahoma Historical Society photo)