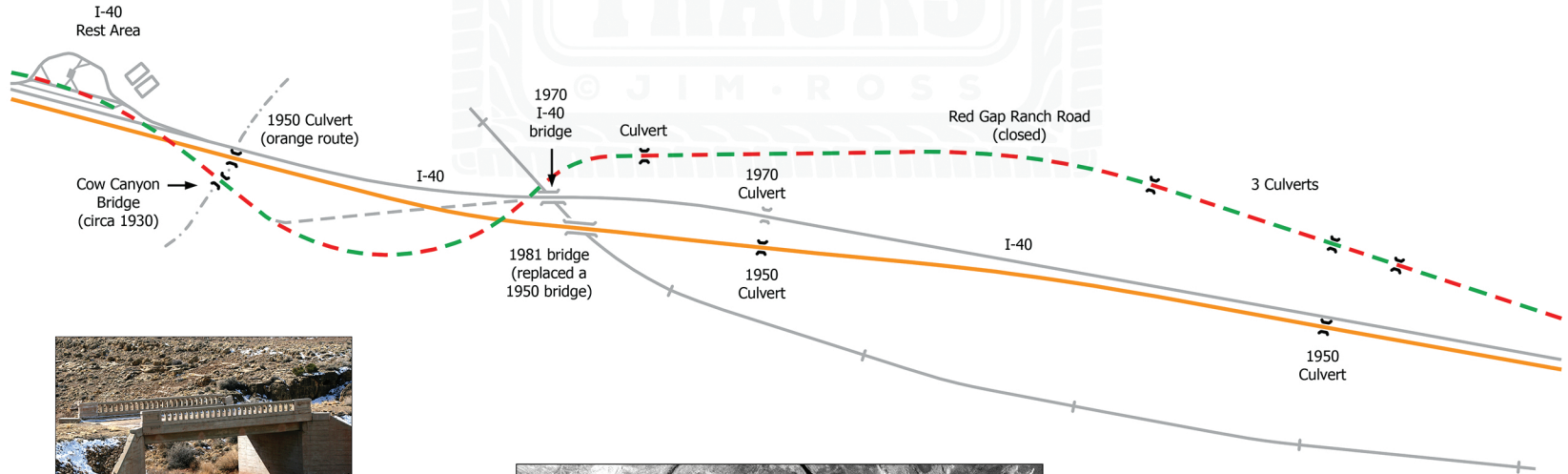


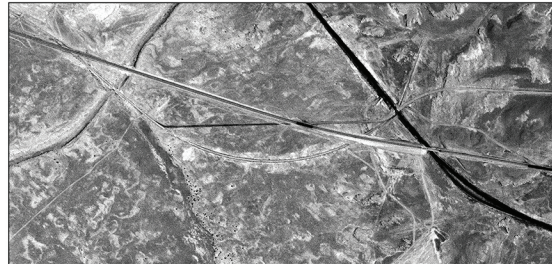
Between Winslow (east)
and Flagstaff (west)

Note on Alignments:

The serpentine original green/red route was paved in the early 1930s in asphalt, which was in bad shape by 1950. The 2-lane upgrade (orange) provided a much straighter alignment. It was later adopted by eastbound I-40.



The abandoned Cow Canyon Bridge on original US 66.



A 1953 aerial confirms the alignments depicted on the map. The connector road (dashed gray line on the map) was used during construction of the orange route's bridge over the RR, which required embankment buildup that blocked the green/red alignment.