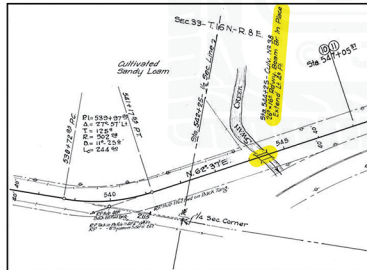
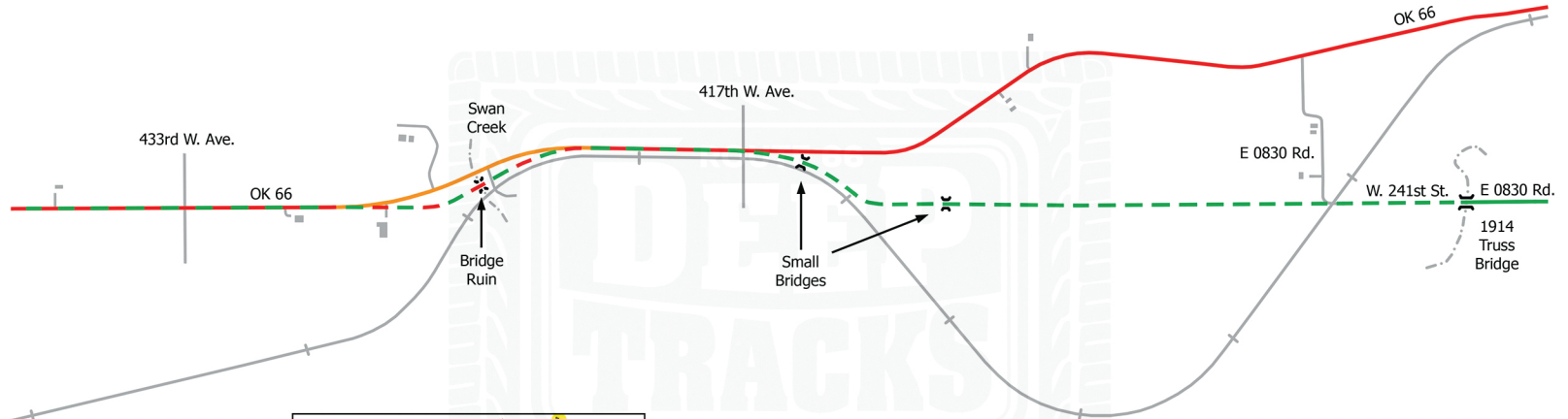


Between Sapulpa (east)
and Depew (west)



Project plans for 1928 paving show the existing bridge on Swan Creek, with a notation to expand its width from 16' to 20'.

Alignments on this Map

Green: Original route prior to paving, which adopted the path of the Ozark Trails.

Red: 1928 first paved alignment.

Orange: Early 1970s curve correction to the green/red route.