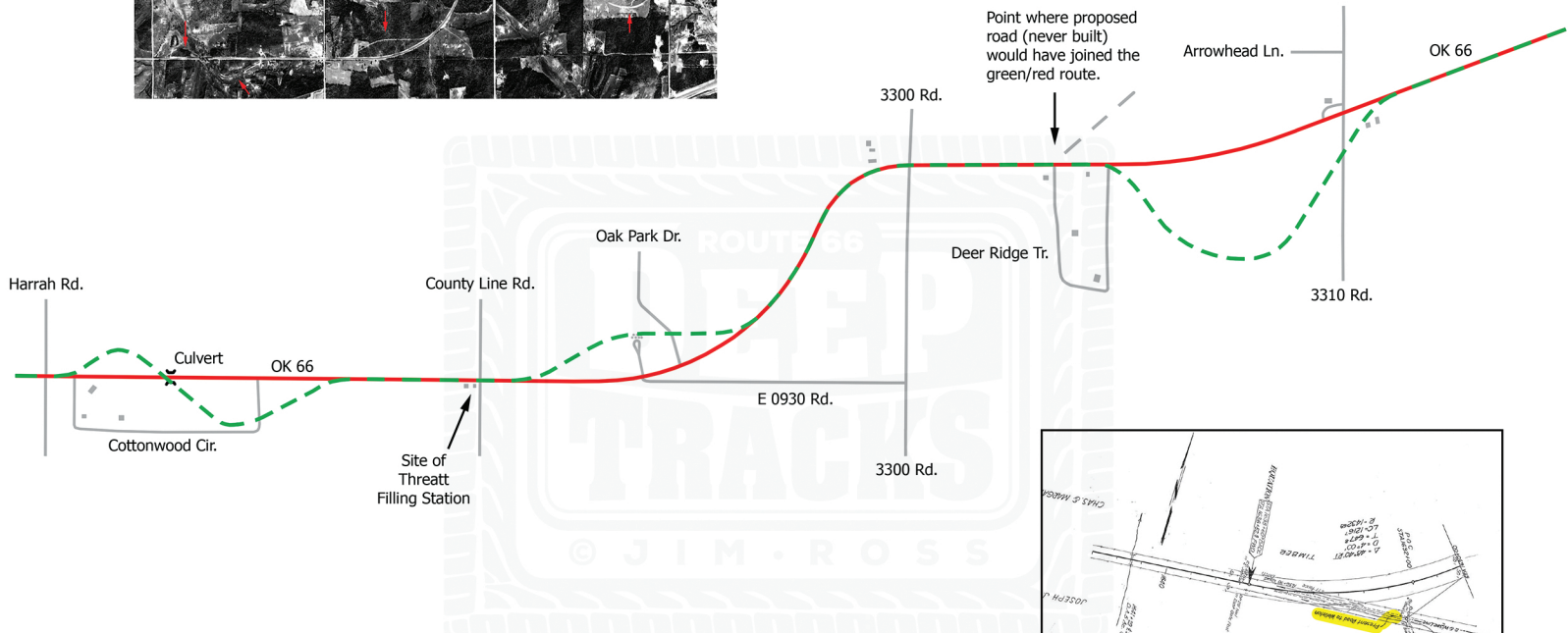




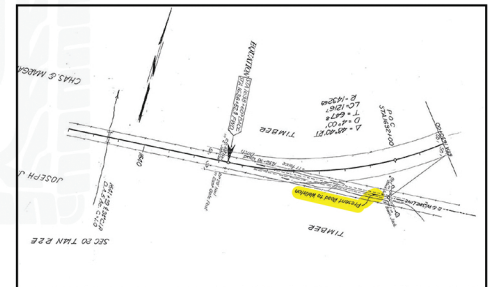
Between Chandler (east)  
and Arcadia (west)



Alignments on this Map

Green: Original route prior to paving. The green loops are marked on 1928 project plans for paving as "Present Road" and are clearly visible on the 1955 aerial photograph above.

Red: First paved alignment, which was graded and drained in 1930, graveled in 1932, and paved in 1933.



The document above is from voided plans first drafted in 1926 for FAP 137-E, which were later revised. It shows the diagonal from Wellston that was never built tying in to the east-west section line road west of town (see dashed gray line and arrow above on red route). The diagonal that became US 66 tied in 1.5 miles to the east. The significance of the document is that it denotes the "Present Road to Wellston," which validates the path of the green/red route where it enters from the east (upper right of map).