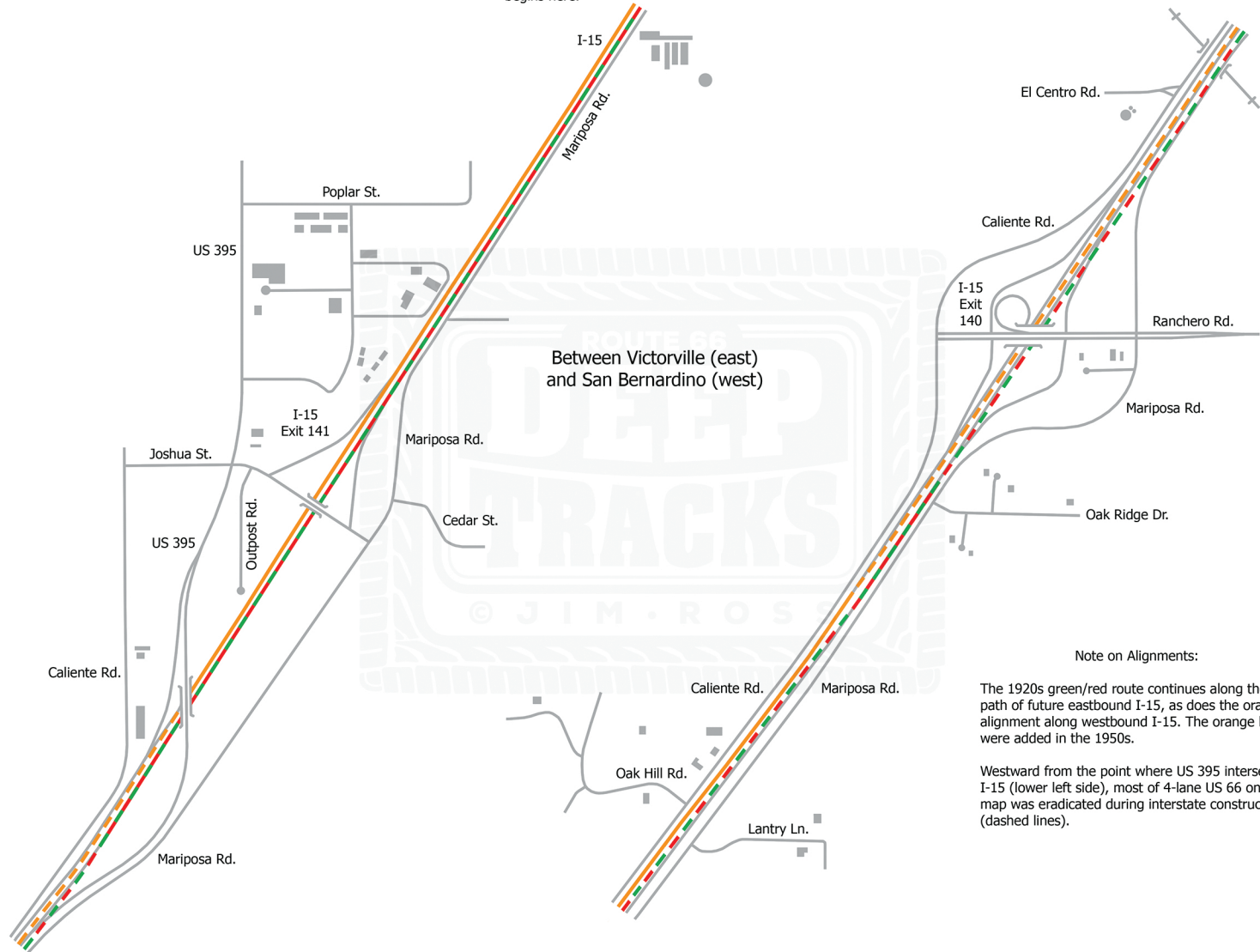


Continuation of the previous map begins here.



Between Victorville (east) and San Bernardino (west)

Note on Alignments:

The 1920s green/red route continues along the path of future eastbound I-15, as does the orange alignment along westbound I-15. The orange lanes were added in the 1950s.

Westward from the point where US 395 intersects I-15 (lower left side), most of 4-lane US 66 on this map was eradicated during interstate construction (dashed lines).