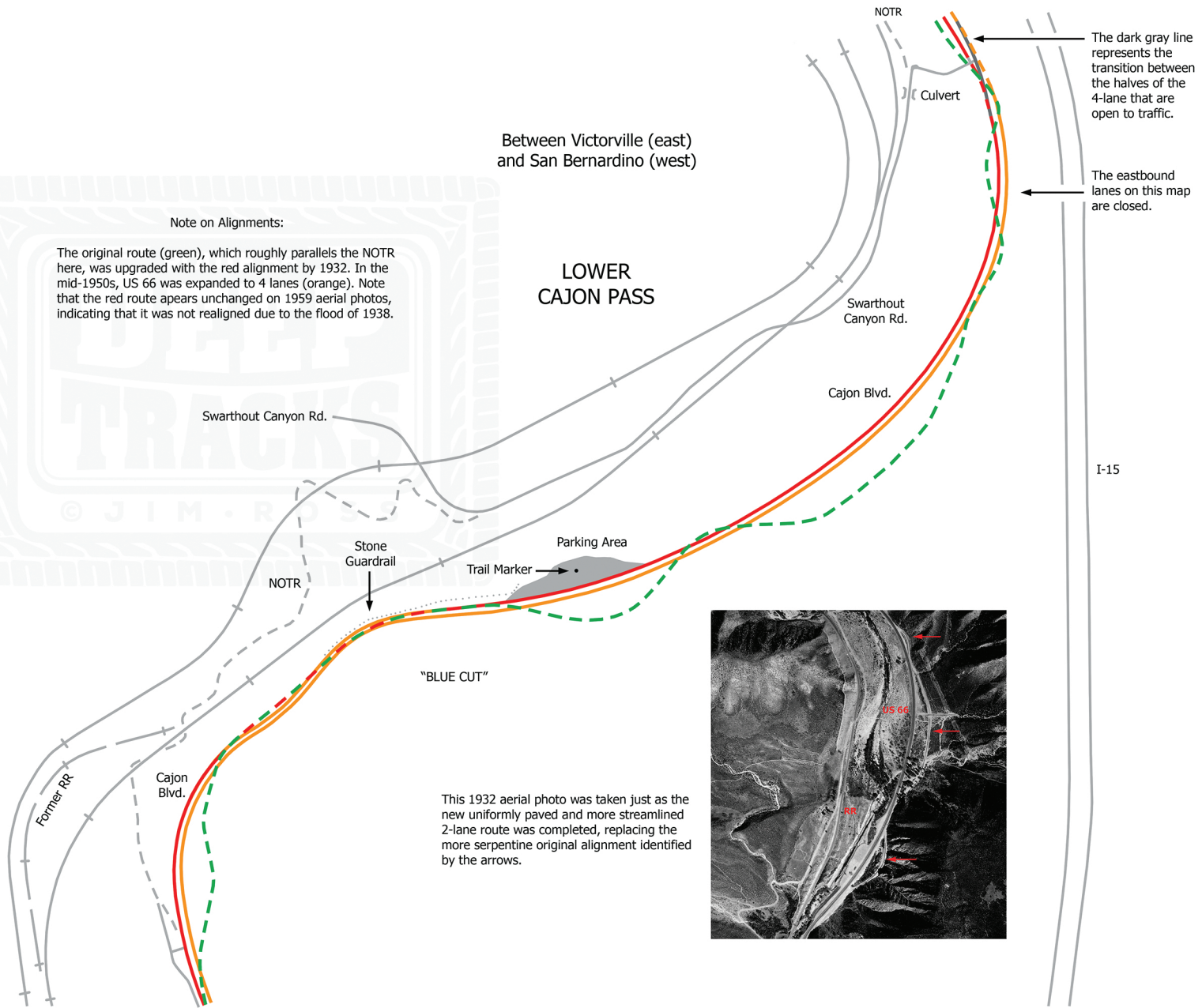


Between Victorville (east)  
and San Bernardino (west)

Note on Alignments:

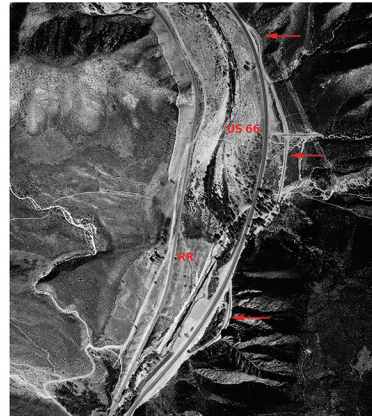
The original route (green), which roughly parallels the NOTR here, was upgraded with the red alignment by 1932. In the mid-1950s, US 66 was expanded to 4 lanes (orange). Note that the red route appears unchanged on 1959 aerial photos, indicating that it was not realigned due to the flood of 1938.

### LOWER CAJON PASS



"BLUE CUT"

This 1932 aerial photo was taken just as the new uniformly paved and more streamlined 2-lane route was completed, replacing the more serpentine original alignment identified by the arrows.



The dark gray line represents the transition between the halves of the 4-lane that are open to traffic.

The eastbound lanes on this map are closed.

I-15