

Note:
Actual distance between the green/red and magenta routes at the top of the map is 8.5 miles. It has been compressed to fit both on the map.

← 1926-1930 IL 4 Temporary Route

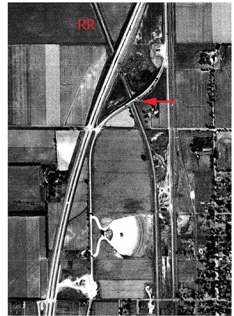
Green/Red: Continues to follow the original path of IL 4, which was already paved when adopted by US 66.

Post-1930 Alignments: →

Orange: Follows the RR and the I-55 frontage road to Washington Rd., where it once curved to cross over the RR (dashed orange line) to join Old Rte. 66 through Litchfield.

Blue: Bypassed the 1930 orange alignment circa 1940.

Magenta: Lanes added in the early 1950s to create a 4-lane highway. The westbound lanes on the upper portion of the map were later removed (dashed magenta line).



1956 aerial photo shows the pre-1950s alignment and RR overhead at Litchfield, as well as the Skyview Drive-In.

Note:
I-55 was under construction here in 1973.

